

W-1

7/8" MTL FURRING @ 16" OC
1 LAYER 5/8" GWB, ONE SIDE

NOTES:
EXTEND TO 6" ABOVE FINISH CEILING

W-2

3 5/8" 20 GA METAL STUDS AT 16" OC
1 LAYER 5/8" GWB, ONE SIDE

NOTE:
WHERE INDICATED THUSLY ON THE FLOOR PLAN INSTALL INSULATION (EITHER SOUND OR THERMAL).
W-2 SI = SOUND INSUATION
W-2 TH = THERMAL INSULATION

W-3

3 5/8" 20 GA METAL STUDS AT 16" OC
1 LAYER 5/8" GWB, EA SIDE

NOTES:
EXTEND TO 6" ABOVE FINISH CEILING

W-4

6" METAL STUDS AT 16" OC
1 LAYER 5/8" GWB, EA SIDE

NOTES:
EXTEND TO 6" ABOVE FINISH CEILING

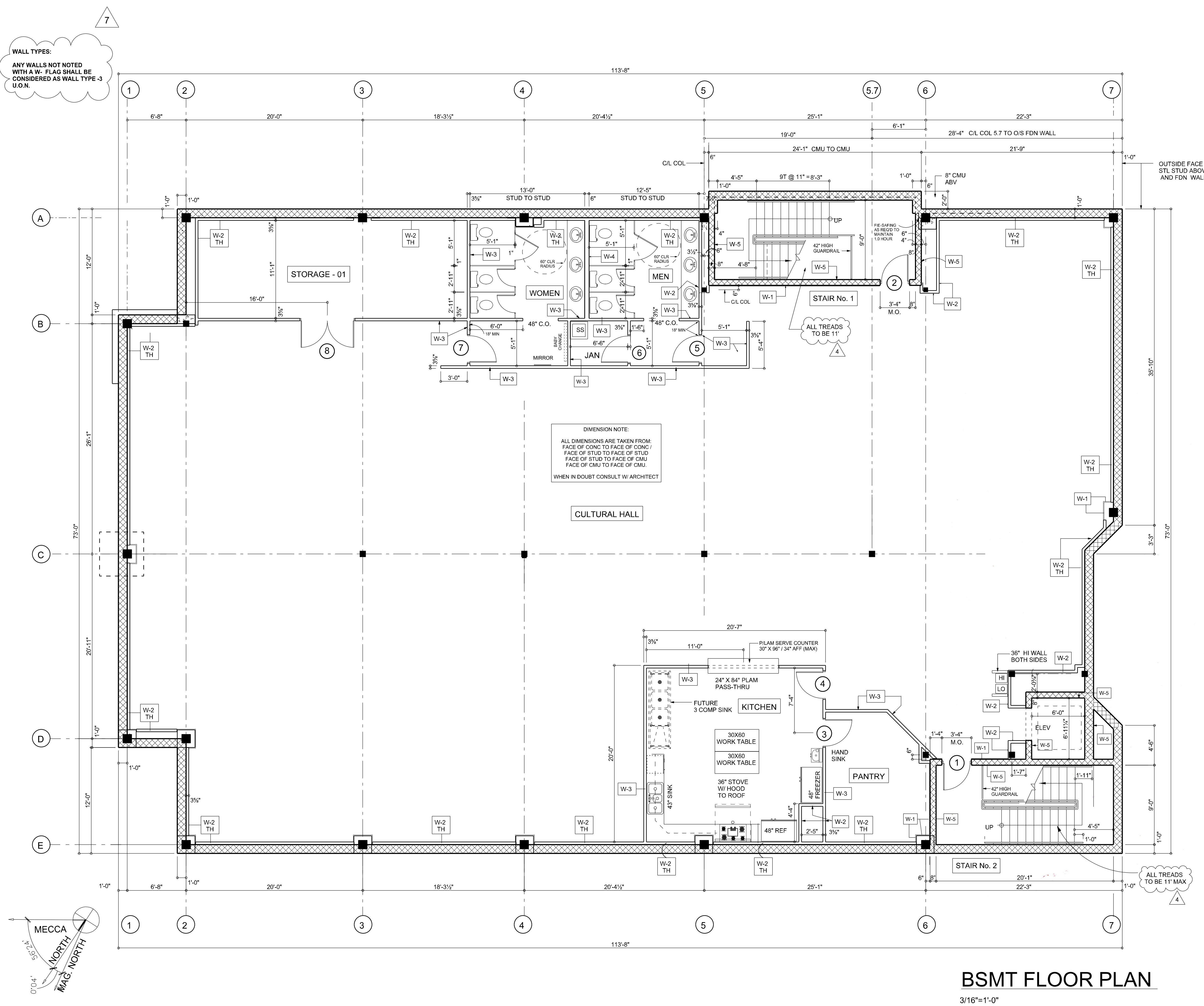
W-5

1 HOUR RATED CMU WALL -- UL# U906
8" NOM CONCRETE BLOCK (D2 CLASSIFICATION)

NOTES:
EXTEND TO UNDERSIDE OF DECK ABOVE FIRESTOP INTERSECTION TO METAL DECK
REFER TO SHEET A0.2 FOR ACTUAL UL TEST DETAIL

W-6

UL-U 499
REFER TO SHEET A0.2 FOR ACTUAL UL TEST DETAIL



Freeland Engineering, P.C.
10814 Courthouse Rd
Fredericksburg, VA 22408
Ph: 540.898.3092
Fax: 877.658.7735
Web: www.freelandengineeringpc.com
Email: rfreeland@freelandengineeringpc.com

WEST END ISLAMIC CENTER
GLEN ALLEN, VA

BSMT FLOOR PLAN
3/16"=1'-0"

Rev #	Description	Date
2	REVISE CIL COL TO MULTIPURPOSE ROOM	2/5/2018
3	ADD BRK / REVISE DETAILS	6-29-18
4	REVISE WALL SECTIONS / PLANS	10-23-18
7	REVIEW COMMENTS	11-6-19
8	4TH RESUBMITTAL - 10/31/2019	12-4-19

Initials: MMR

Professional Engineer Seal: R. P. Freeland, License No. 040752, dated 2/14/19.

Drawn By:
Designed By:
Checked By:
Project #: 3423
Date: 1-2-2018
Issue:
Sheet:

Sheet No: **A1.0**